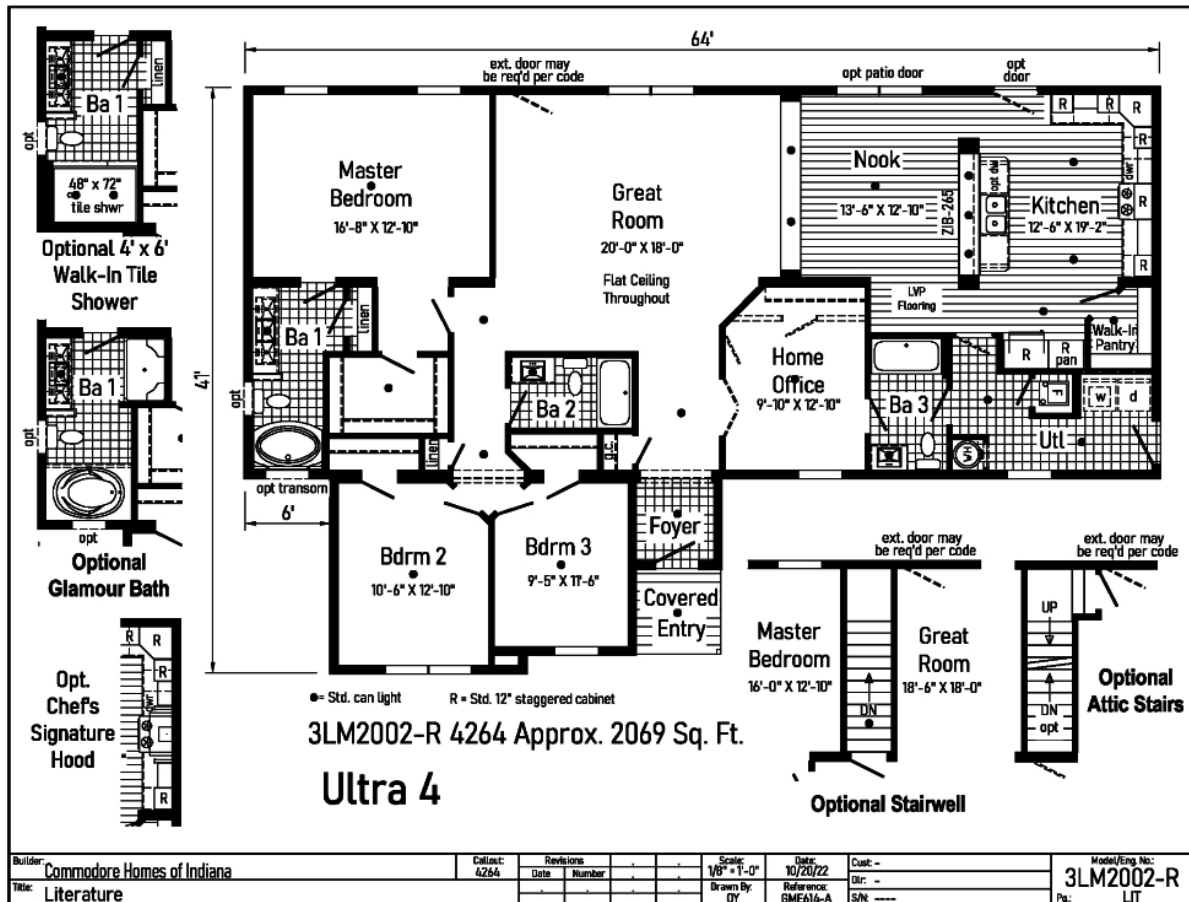


## PRINTABLE INFO SHEET

Series: Landmark Ultra  
Model: 3LM2002R Ultra 4



## About This Model

Style: Ranch / Bedrooms: 3 / Bathrooms: 3 / Square Feet: 2069

## CUSTOMER CONTACT

Notes:

## PRINTABLE INFO SHEET

**Series: Landmark Ultra**  
**Model: 3LM2002R Ultra 4**



## Standards & Features

### Interior

Smooth Drywall Throughout  
Flat Ceiling Throughout  
Stipple Ceiling  
Coveless Ceiling Joints  
8' Sidewall Height  
Brushed Nickel 5-Arm Dining Room Light  
Recessed LED Lighting  
Mortise Door Hinges  
Metal Interior Passage Sets  
Door Stops  
2 1/4" Door & Window Casing  
3" Baseboard Moulding  
Smooth 6-Panel Doors  
Smoke Detectors with Battery Back-Up  
Wire Shelving in Guest Closet  
Brushed Nickel Interior Hardware and Lighting

### Exterior

Patina Coach Light at Front Door  
Patina Coach Light at Rear Door  
Two GFI-Protected Exterior Receptacle  
Vinyl Dutch Lap Siding with Larger  
Starter Strip to Cover Sill Plate  
O.S.B. Sheathing  
Fixed Roof with 10" Eaves (26'8" & 30')  
16" Eaves (27'4")  
Ridgevent Roof Ventilation System  
3/0x6/8 6-Panel Fiberglass Front and Rear  
Door with Deadbolt Lock  
MI Vinyl Insulated Low-E Windows (Gridless)  
Raised Panel Shutters on Front Door Side

### Kitchen

Whirlpool Deluxe 30" Gas Free Standing  
Range  
Power Range Hood with Light  
Whirlpool 18 Cubic Foot, No-Frost Refrigerator  
w/ Ice maker  
Stainless Steel Double Bowl Sink (33x22x8)  
Tight Mesh Shelving in Pantry  
One USB Receptacle

### Baths

One Piece Fiberglass Tub/Showers  
Garden Tub/Showers-Master Bathroom  
Tub Overflows  
Anti-Scald Valves on Showers & Tubs  
1.6 Gallon Per Flush Elongated Toilets  
China Stool, Tank, and Lid  
China Sinks with Overflows and Pop-Up Drains  
Lighted Vent Fan in Each Bath  
2-Arm Infinity Bath Lights  
Pencil Edge Mirrors

### Cabinetry

Hardwood Stiles  
3/4 Overlay Hardwood Mission Flat  
Panel Cabinet Doors  
Evermore Custom Cabinetry (KCMA Certified)  
Crown Moulding on Overhead Cabinets  
Transitional Cabinet Hardware  
30"/42" Staggered Wall Overhead Cabinets  
or 42" Overhead Cabinets  
Lined Overhead Cabinets  
Adjustable Shelves in Overhead Staggered Cabinets

## CUSTOMER CONTACT

Notes:

---

---

---

---

## PRINTABLE INFO SHEET

**Series: Landmark Ultra**  
**Model: 3LM2002R Ultra 4**



## Standards & Features (continued)

### Cabinetry (continued)

Dovetail Drawer Construction  
75#Drawer Guides  
Base and Center Shelf in Base Cabinets  
WilsonArt Laminate Countertops with  
Laminate Edging  
4" WilsonArt Laminate Backsplash  
36" High Vanities  
Base Shelf in Vanities  
Bump-out Staggered Wall Cabinet over Range  
Refrigerator Surround

### Utilities

200 AMP Electrical Service  
Copper Wiring Throughout  
95 Plus Efficient Gas Furnace  
- Perimeter Heat  
- Woodgrain Furnace Door  
- Fiberglass Heat Ducts  
- Air Return System  
Air Conditioning Thermostat with 5-Wires  
40 Gallon Electric Water Heater with Pan  
Structured Flow Brushed Nickel Faucets  
Main Water Line Shut-Off Valve  
Water Shut-Off Valves - Where Accessible  
Plumb and Wire for Washer  
Wire and Vent for Dryer  
One Exterior Water Faucet  
Recessed Dryer Box (where applicable)

### Insulation

R-19 Fiberglass Insulation in Walls  
R-38 Avg. Blown Insulation in Ceiling

### Flooring

Choice of Various Styles of SHAW 16 oz.  
Carpet w/ ShawGuard Carpet Protector  
Rebond Carpet Pad with Tackstrip  
Carpet Installation  
No-Wax Vinyl Floor Coverings  
Entry Foyer Vinyl Flooring

### Bedrooms

Ceiling Lights  
Egress Window Each Bedroom  
Wire Shelving in Wardrobes  
4" LED Light in All Walk-In Closets

### Construction

2x10 Floor Joists 16" on Center\*\*  
2x6 Exterior Walls 16" on Center\*\*  
2x4 Interior Walls  
40# Roof Load

## CUSTOMER CONTACT

Notes:

---

---

---

---